

RAIVS

Network Rail

Case Study



TRACSIS

ONTRAC

Rail Safety Software

Quote

“OnTrac’s RAIVS Possession Viewer tool exceeded our expectations and has helped to transform the way we consume & interact with our data. The team listened and created a bespoke tool to fit our needs, communicating with us consistently throughout product development. Having the ability to see resource allocation & possessions visually represented on a map makes the whole process so much easier and allows us to make the most of our resources for full efficiency.”

- Gemma Arnold, RAIVS project sponsor, Network Rail

Problem

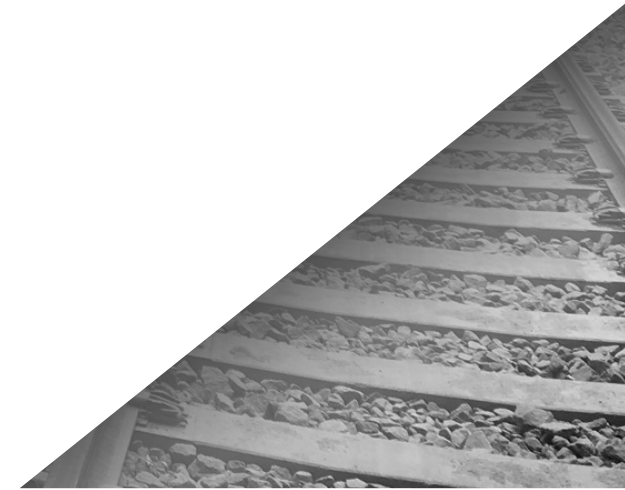
OnTrac improved Network Rail's planning process with a bespoke visualisation tool to mitigate risk of resources being under- or over-allocated.

As the owner and infrastructure manager of most of Britain's railway network, Network Rail is responsible for maintaining track spanning 20,000 miles across the UK. Network Rail plans and delivers hundreds of projects each year to ensure the continual improvement of our railways. The planning process can be arduous; as there are so many projects, work needs to be planned years in advance at times.

Planners were struggling to have clarity of what possessions were being used at a given time. This was resulting in either underused or overused resources, resulting in lost time and money. The overused possessions were having to be repaired or renewed on a more regular basis while the underused could have been utilised instead.

The issue was there was no visual representation of these assets, which made it difficult to decipher when they were available for use.

In an ideal world, planners would have a way of viewing possessions as a snapshot, in order to quickly pinpoint which ones had projects planned in against them.



Solution

Enter OnTrac; the number 1 rail technology provider in the UK.

OnTrac has a strong track record of creating innovative technology to assist in the efficient planning and delivery of safe work.

Ontrac developed a digital mapping tool called Resource Access Intelligence Visualisation System (RAIVS). RAIVS allows for regions to submit their plans for resource usage over several years, which enables the team to identify where resources are being over-allocated. The system takes in data from various Network Rail databases such as P6, PPS, NROL & DWWP, and shows this possession data visually for easier planning.

The user can utilise the search functionality to look for the possessions and associated resources needed for a project, overlaid on a map.

Network Rail also required the ability to show where PPS possessions and worksites were geographically in order to help the access mapping team. OnTrac was able to draw colour-coded possessions to be placed on top of the track data, which matched the existing processes used by the planning teams, creating a seamless transition over to the new tool.

An exporting tool is also included within RAIVS, that allows users to take snapshots of their search queries and print formatted PDFs to be used for planning purposes externally from the tool.



Results

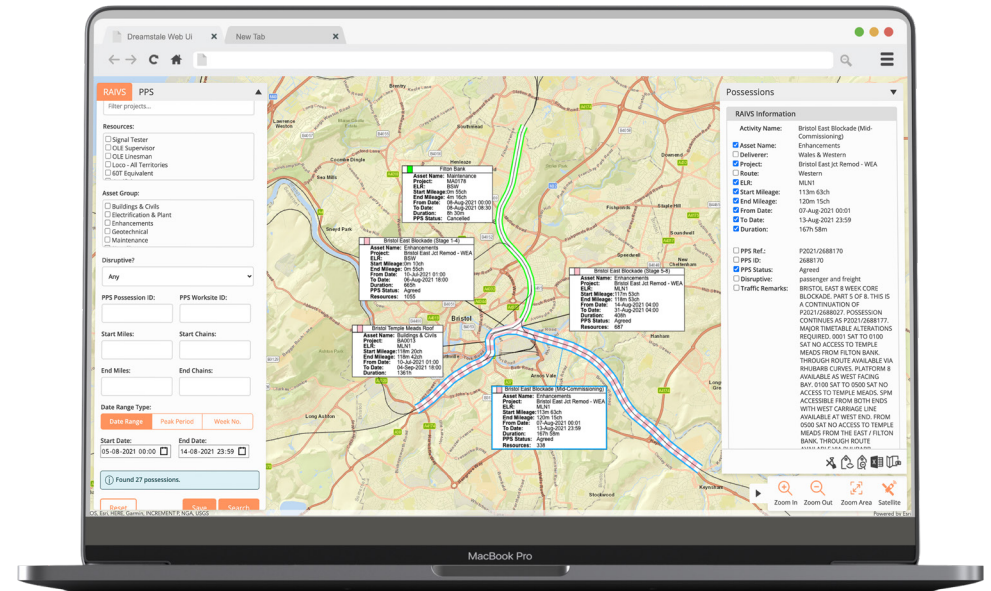
OnTrac's digital solution has made it possible for Network Rail projects to be planned quickly and efficiently. Network Rail is now empowered to make the most of its possessions, which has made a substantial difference to the business's bottom line.

The team no longer has to spend hours drawing out plans manually; the templated mapping tool has cut planning time in half, which has boosted productivity as projects can begin quicker. Further to this, these plans are now safe from loss or damage, securely stored in the cloud, which has alleviated stress from the team.

The tool is accessible anywhere on site and is easy for any member of the team to use, no matter how technical, which has enhanced collaboration.

Network Rail uses RAIVS to ensure its projects run smoothly, uninterrupted by resource issues or clashes with other projects. Organisation has been greatly improved and now the planning process runs like a well-oiled machine.

RAIVS is intrinsic to the planning of projects carried out by the Network Rail team and has revolutionised how they work.



Get in touch

If you're interested how OnTrac's expertise could help your business contact us for more information.

www.on-trac.co.uk

0191 477 4951

enquiries@on-trac.co.uk



TRAC SIS

ONTRAC

Rail Safety Software